

SUPPLEMENTARY MATERIAL

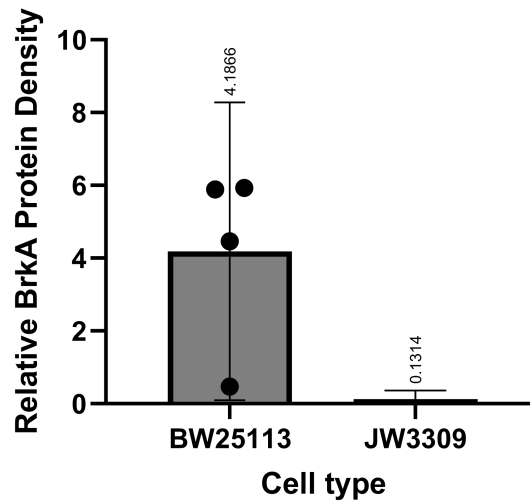


FIG. S1 Relative BrkA Protein Density confirms that the FkpA stabilizes the BrkA protein structure. The Barplot represents the relative BrkA protein density of whole cell lysates from BW25113 WT or JW3309 *fkpA* knockout *E. coli*. The relative BrkA protein density is attained by dividing the protein density of BrkA from Western Blot divided by the average protein density of total proteins from Gel Imaging after SDS Electrophoresis.