

SUPPLEMENTAL MATERIALS

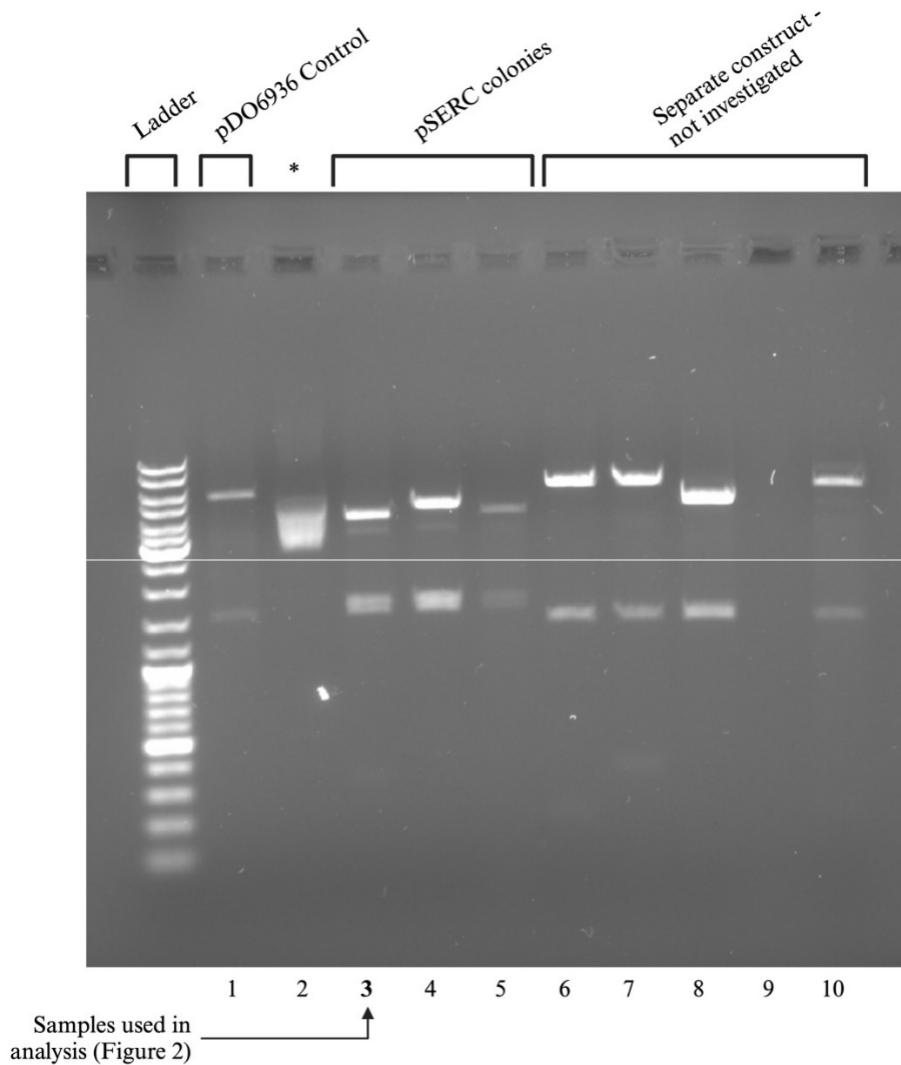


FIG. S1 Whole-gel image for the validation of the 336 base pair insert into *brkA* using EcoRI digestion. Purified pDO6935 (control), PSERC (112 a.a. insert) plasmid, and a separate plasmid construct (not investigated further) were digested with EcoRI. Lane 2, labelled with an asterisk, corresponds to a loading error. Samples from lane 3 were chosen for further analysis. Lanes 6-10 correspond to a separate plasmid construct that was not further investigated.

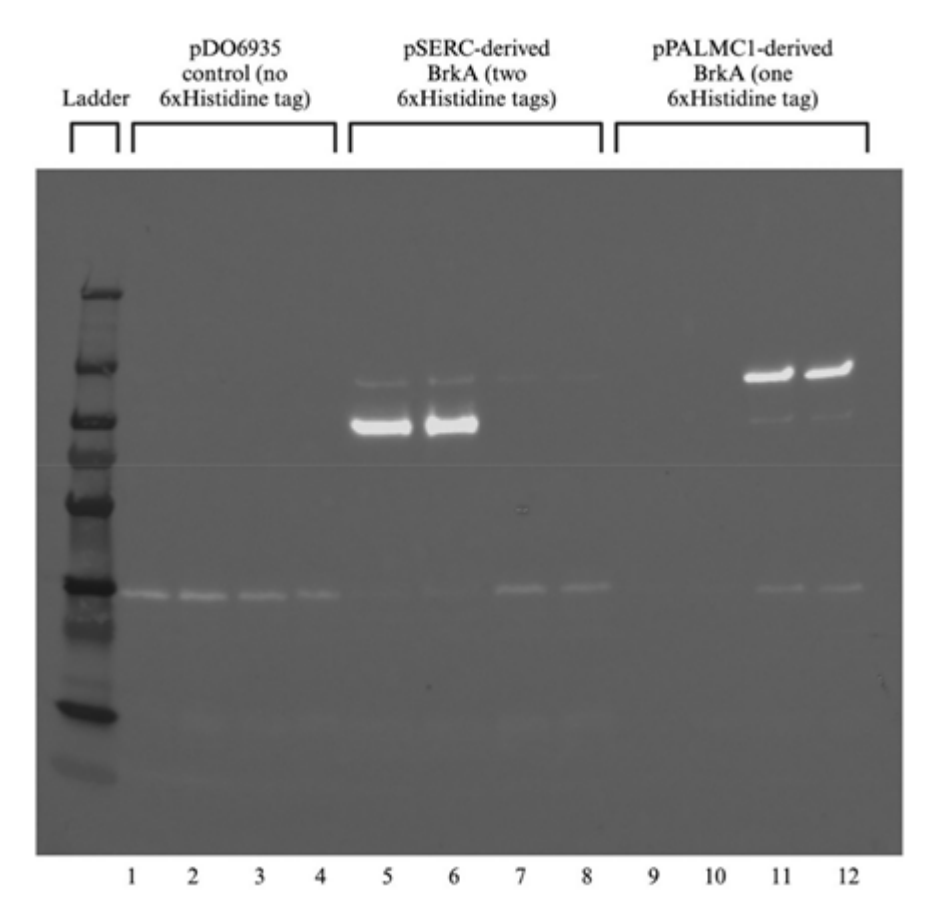


FIG. S2 Whole-gel image for the identification of surface expression of pSERC-derived BrkA using trypsin-accessibility. DH5-alpha *E. coli* cells transformed with pDO6935 (WT BrkA), pSERC (double 6xHistidine-tagged BrkA), and pPALMC1 (single 6xHistidine tagged-BrkA) were isolated and incubated with 200 ug/ml trypsin to digest surface-expressed BrkA. Cells were then lysed, ran using SDS-PAGE, and BrkA expression was measured using Western blot with anti-6xHistidine primary antibody.