

FIG. S1 Second replicate of SDS-PAGE gel showing products from chitin-binding assay. SDS ladder used was Precision Plus Protein Standard (Bio-rad, 10 μ L). Total CFPS run time was 2 hours with lanes DHFR 2h and pM3CRYY 2h as references. Concentration of plasmids was 20 ng/ μ L. Western ladder used was PageRuler Plus Pre-Stained Protein Ladder (ThermoFisher, 10 μ L).

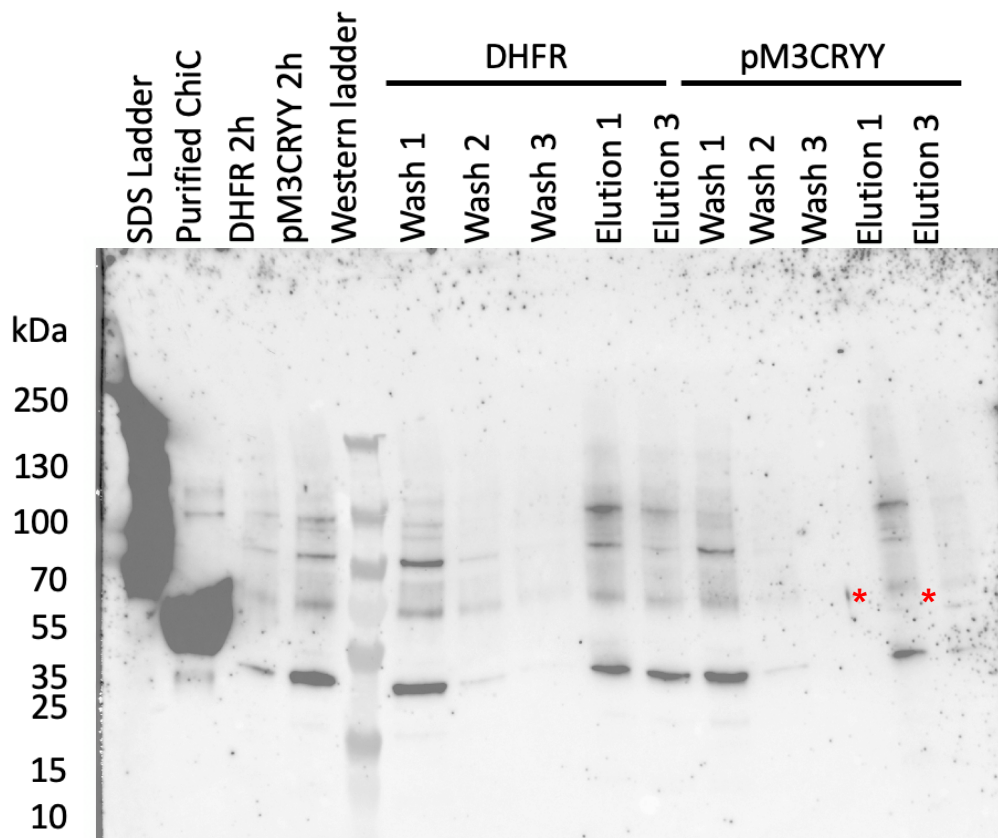


FIG. S2 ChiC exhibits chitin-binding ability. Composite western blot showing chitin-binding assay washes and elutions with products from DHFR and pM3CRYY samples. Primary antibody was anti-6x His mouse (1:1000) and secondary antibody was anti-mouse HRP rabbit (1:100000). SDS ladder used was Precision Plus Protein Standard (Bio-rad, 10 μ L). Total CFPS run time was 2 hours with lanes DHFR 2h and pM3CRYY 2h as references. Concentration of plasmids was 20 ng/ μ L. Western ladder used was PageRuler Plus Pre-Stained Protein Ladder (ThermoFisher, 10 μ L). ChiC bands are indicated by red asterisks. Bands are harder to visualize in the composite blot which is why chemiluminescent blot was used as the main figure.