

SUPPLEMENTARY MATERIAL

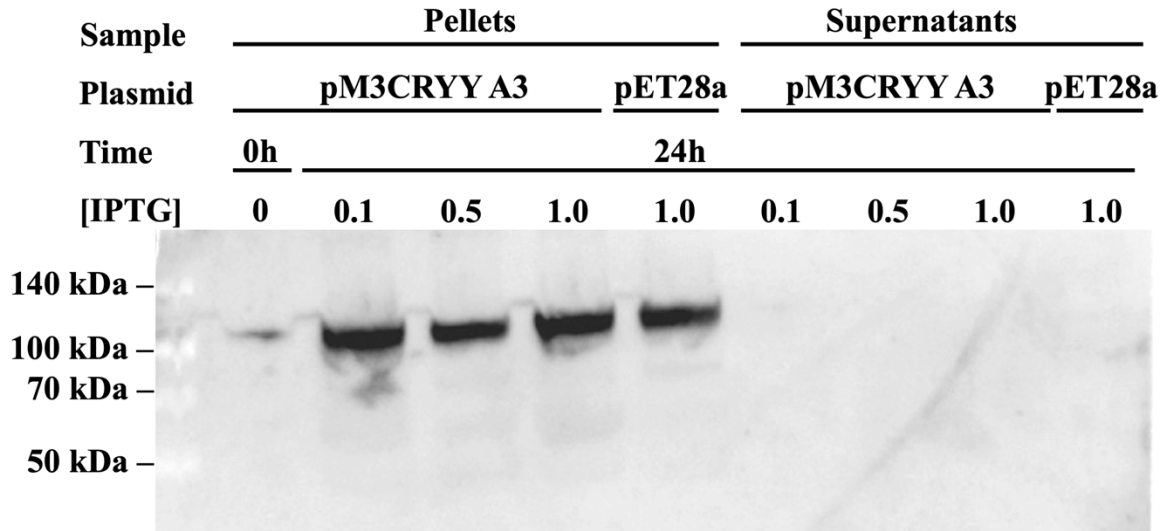


FIG. S1 Western blot against σ^{70} factor reveals bands at 100 kDa in cell lysate samples but not in supernatants. Proteins were extracted from IPTG-induced pM3CRYY A3 and pET28a *E. coli* BL21 pellet and supernatant samples using a bead beating method of cell lysis and separated using SDS-PAGE. Cytosolic σ^{70} was probed for using an anti- σ^{70} antibody. Lane 1 contains a molecular marker. IPTG concentration and induction times are indicated above. Lane 6 corresponds to negative control of pET28a empty vector *E. coli* BL21 samples induced with 1.0 mM IPTG for 24 hours. Lanes 7-10 contain supernatant samples from equivalent conditions to those described for lanes 3-6.

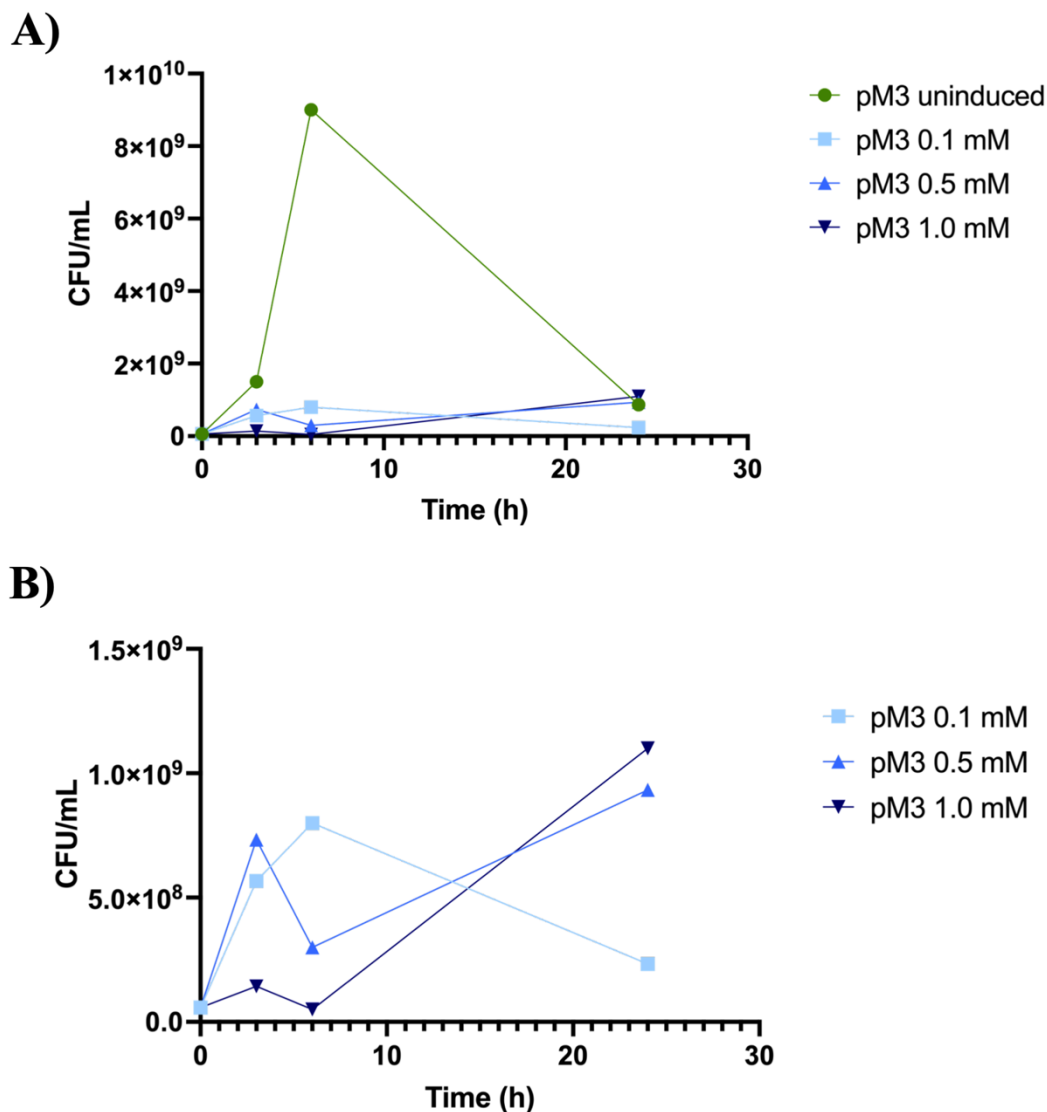


FIG. S2 Viable cell growth curve analysis on uninduced and IPTG-induced pM3CRYY *E. coli* BL21(DE3) cultures. (A) pM3 corresponds to pM3CRYY A3 *E. coli* BL21 samples treated with 0, 0.1, 0.5, and 1.0 mM IPTG. Green points correspond to uninduced culture samples. Blue points correspond to IPTG-induced culture samples. Samples were collected at 0, 3, 6, and 24 hours, and 10 μ L of varying sample dilutions were spot-plated in triplicate on LB-kan plates, $n=1$. (B) Growth curve described in (A) with uninduced sample data omitted for visualization purposes.