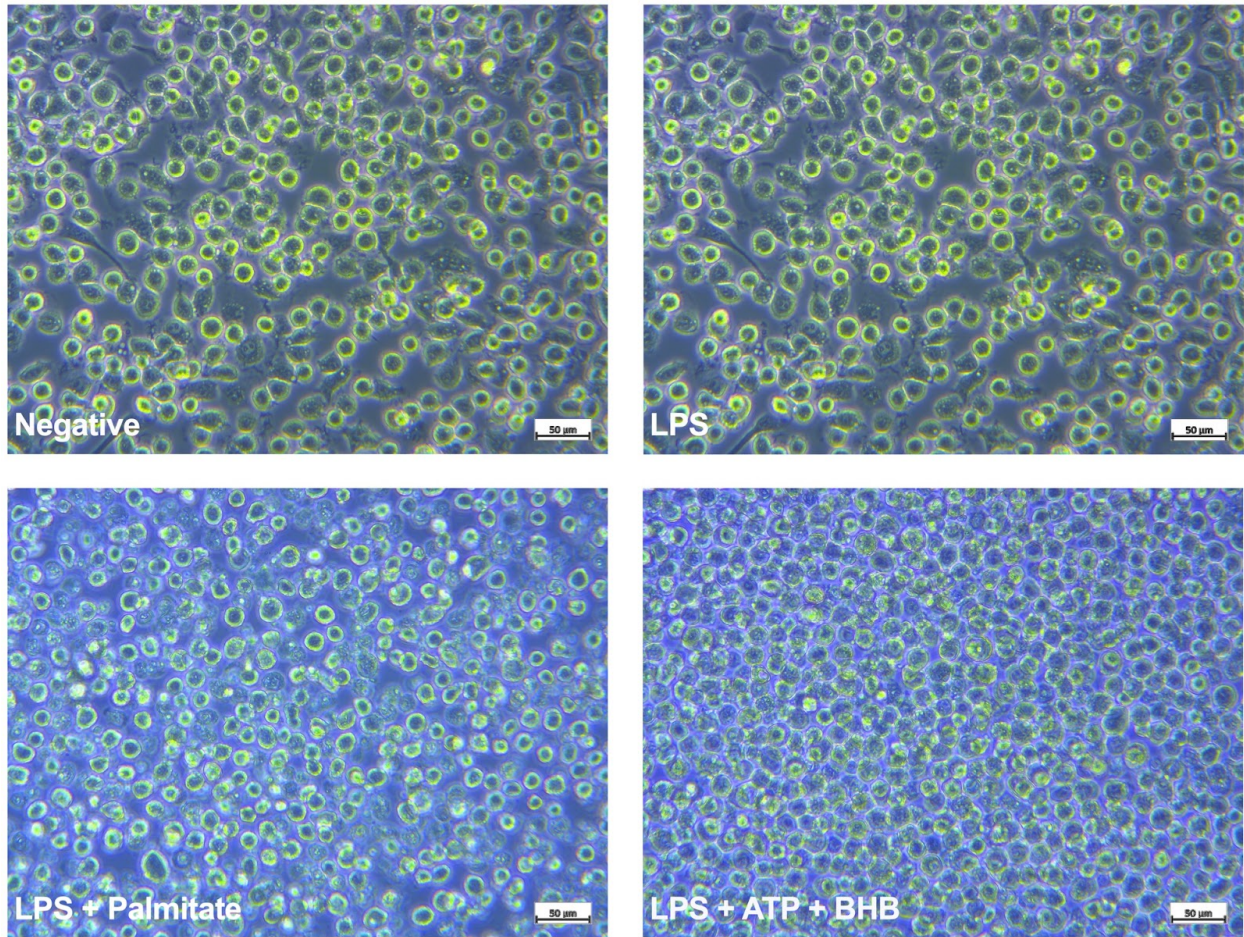
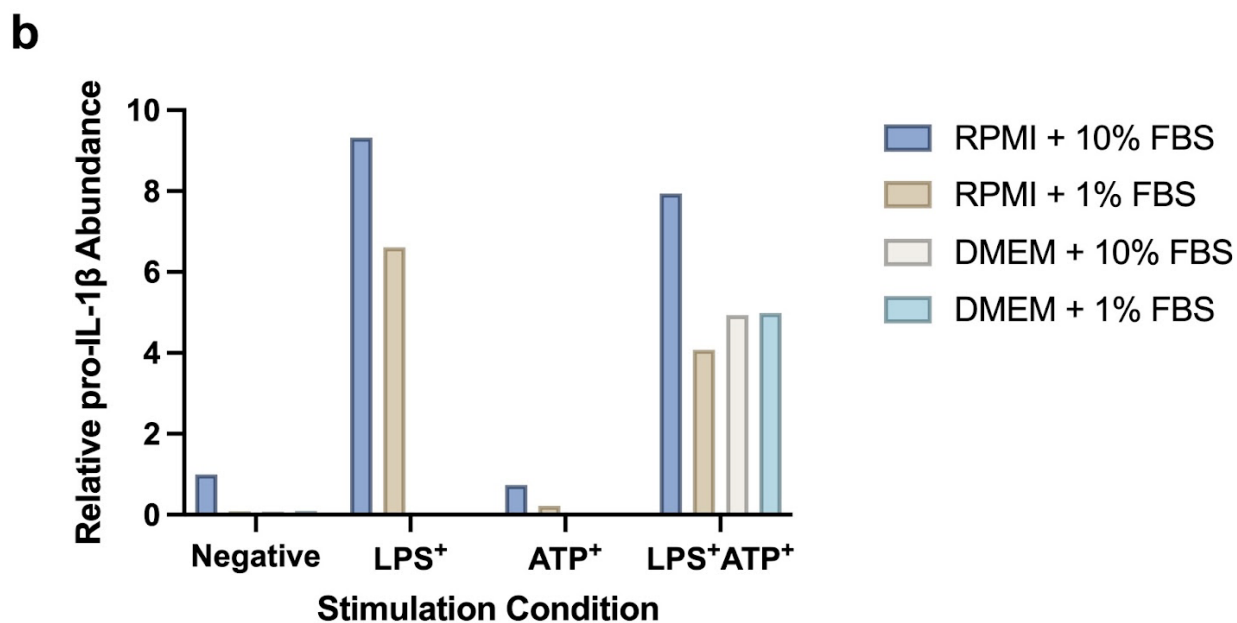
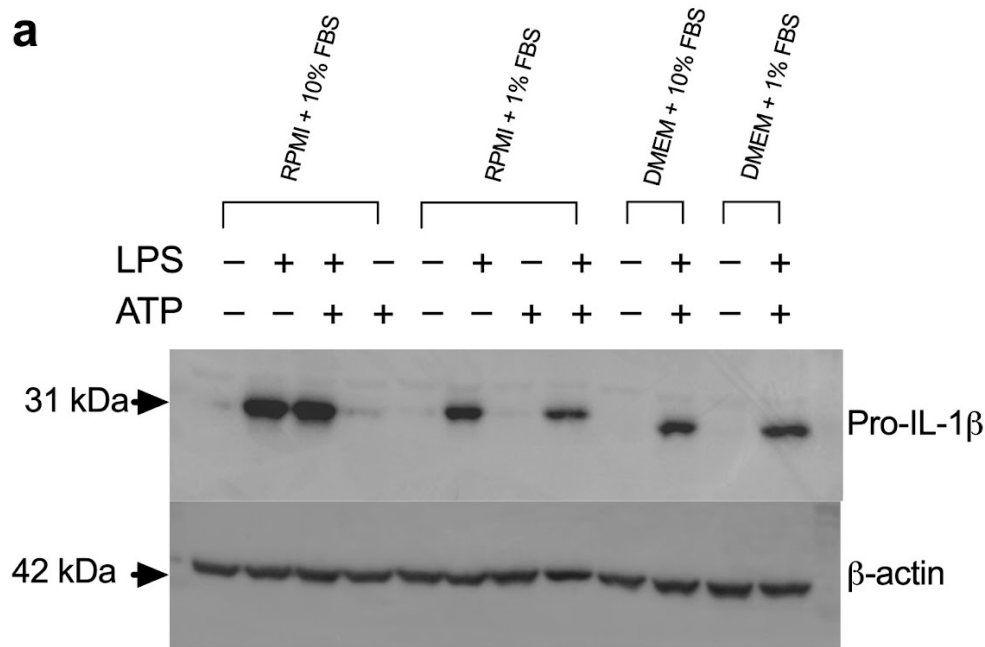


## SUPPLEMENTARY MATERIAL



### SUPPLEMENTARY FIG. 1 Palmitate stimulation induces cell detachment in J774A.1

**cells.** Phase contrast images of J774A.1 cells after 500 ng/ml LPS priming for 4 hours and 200  $\mu$ M palmitate stimulation for 14 hour. n=1.



**SUPPLEMENTARY FIG. 2 RPMI 1640 + 10% FBS media induces the highest pro-IL-1 $\beta$  expression in J774A.1 cells.** (a) Representative western blot analysis of IL-1 $\beta$  and  $\beta$ -actin in J774A.1 cells primed with LPS (500 ng/ml) for 4 hours and stimulated with ATP (0.2 mM) for

30 minutes under various media and FBS concentrations. **(b)** Relative abundance of pro-IL-1 $\beta$  after densitometry analysis with ImageJ and normalization to  $\beta$ -actin. n = 1.