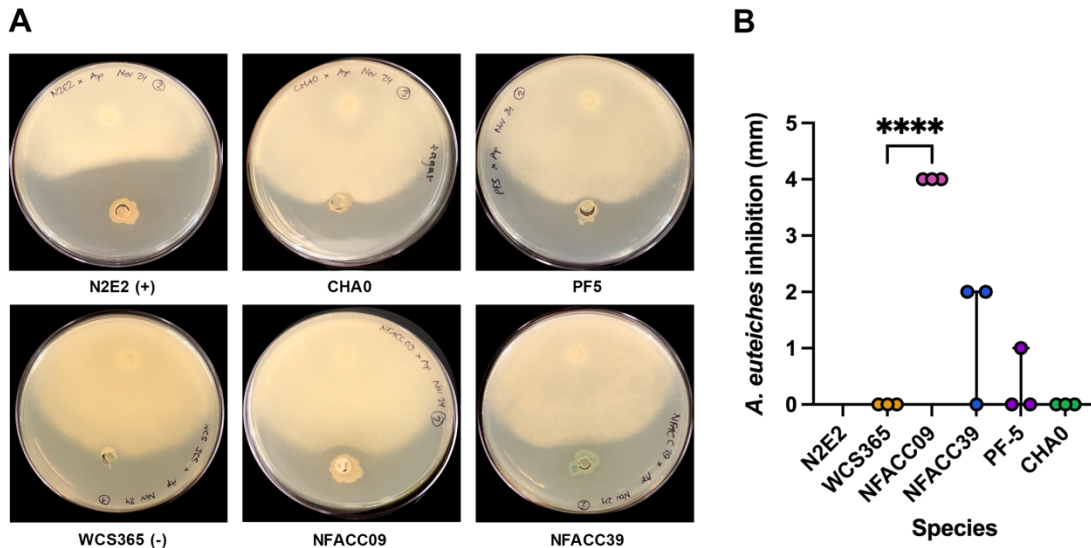
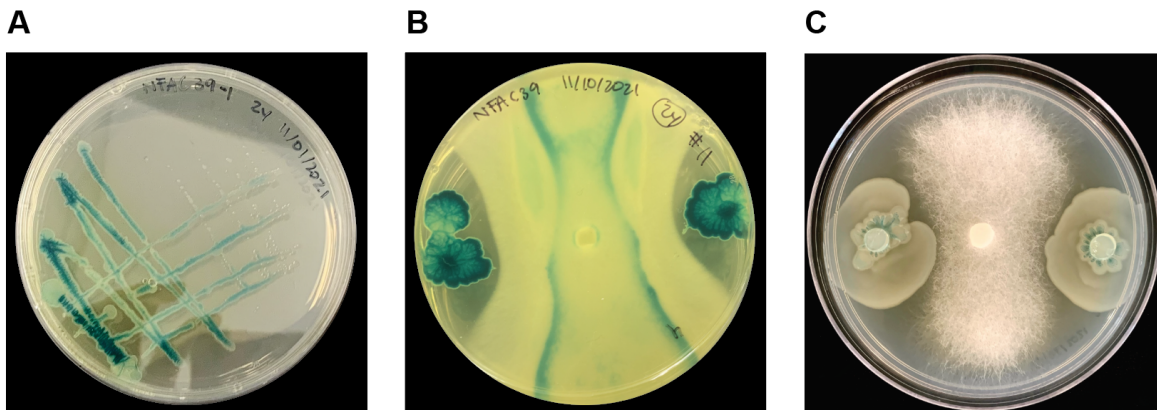


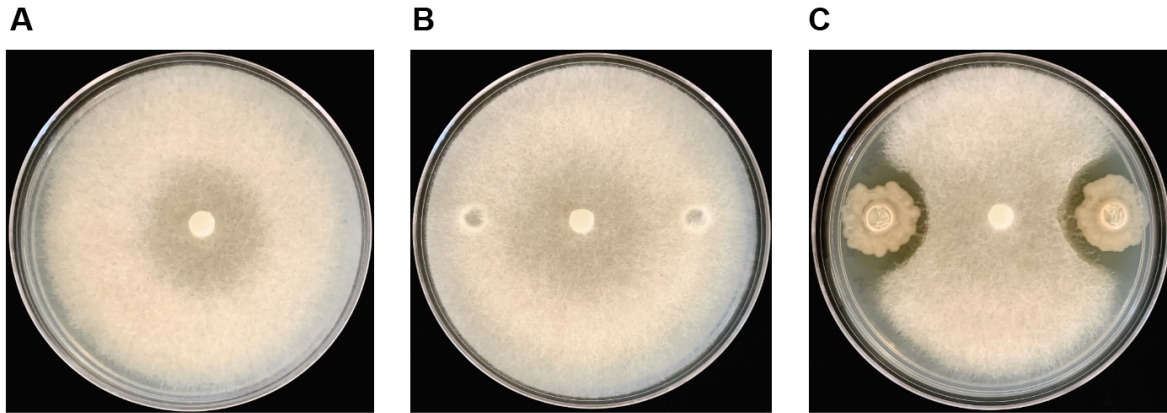
## SUPPLEMENTAL FIGURES



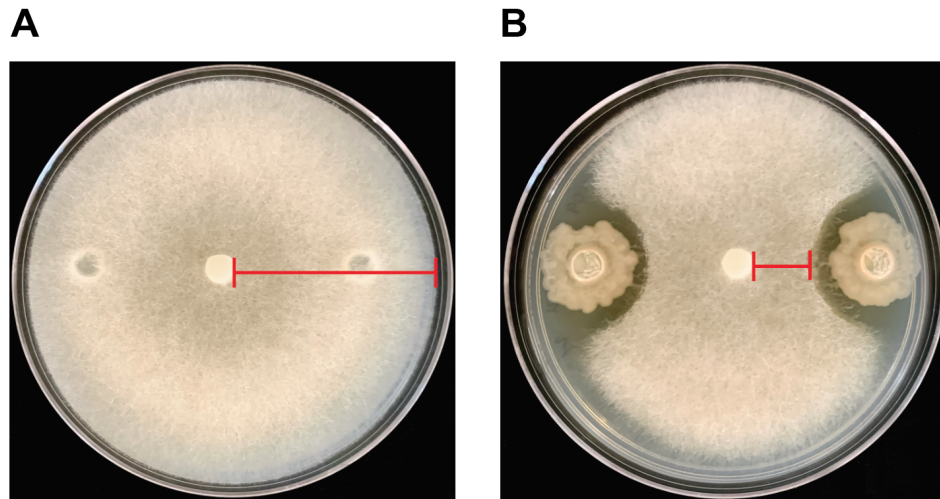
**Supplemental Figure 1: *P. sp.* NFACC09 inhibits *A. euteiches* growth *in vitro*.** A) Representative images of co-culture assay 2. B) Inhibition zone (mm) of each bacterial species. Ordinary one-way ANOVA and Dunnet's multiple comparisons test, \*\*\*\*  $p < 0.0001$ , \*\*  $p < 0.01$ .



**Supplemental Figure 2: *P. sp.* NFACC39 colonies appear blue and discolour PDA to varying degrees in solo culture and in the presence of *A. euteiches*.** A) solo culture of *P. sp.* NFACC39 showing bright blue appearance of bacterial colonies and neon yellow discoloration of PDA. B) An Assay 1 *A. euteiches* and *P. sp.* NFACC39 co-culture showing very bright blue appearance of bacterial colonies, blue pigment discoloration of *A. euteiches*, and very neon yellow discoloration of PDA. C) An Assay 3 *A. euteiches* and *P. sp.* NFACC39 co-culture showing faded blue pigment of bacterial colonies and limited discoloration of PDA.



**Supplemental Figure 3: Using the closest distance between *A. euteiches* mycelia and *Pseudomonas* colonies to determine mycelial growth inhibition capability of *Pseudomonas* is not sufficient in resolution or accuracy.** A) A 5-day-old *A. euteiches* growth plate showing complete coverage of healthy, white mycelia from the centre plug to the edge of the plate. B) A 5-day-old Assay 3 co-culture of *A. euteiches* and the negative control *P. fluorescens* WCS365, showing complete overgrowth of healthy, white mycelia from the centre plug, over the bacterial lawn sections, to the edge of the plate. C) A 5-day-old Assay 3 co-culture of *A. euteiches* and *P. sp.* NFACC09, showing visible mycelia-free space on the plate, and yellowing, dying mycelia close to the bacterial colonies.



**Supplemental Figure 4: Using *A. euteiches* growth radius of healthy mycelia to determine *A. euteiches* inhibition capability of *Pseudomonas* strains.** A) 5-day-old Assay 3 co-culture of *A. euteiches* and *P. fluorescens* WCS365 with a growth radius measurement of healthy, white mycelia. B) 5-day-old Assay 3 co-culture of *A. euteiches* and *P. sp.* NFACC09 with a growth radius measurement of healthy, white mycelia. Note yellowing, dying mycelia that are not included.